

## RCW-800WIFI USER MANUAL

Elitech cloud login: [www.i-elitech.com](http://www.i-elitech.com)



iOS APP  
Scan the QR code or  
download on the App Store



Android APP  
Scan the QR code or  
download on the Google play

### Overview

RCW-800WiFi is a temperature and humidity remote monitor based on IoT technology. It can be widely used in foodstuffs, catering, logistics and HACCP System industries and so on. With a combination of WiFi, Elitech App and Cloud platform, users can remotely view, monitor and manage data online via any web browsers or smart phones.

The device has one temperature and one humidity sensor and it is equipped with built-in rechargeable lithium battery that can provide real-time data uploading and alarm notifications continuously even after power outages and blackouts.

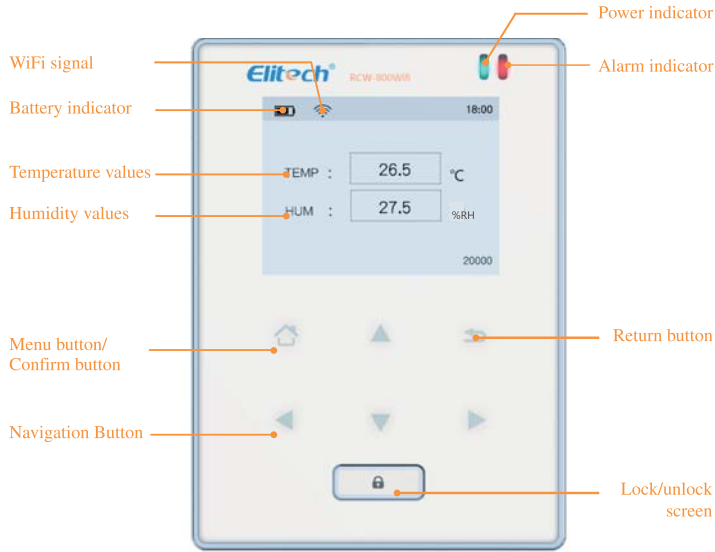
### Features

- ◆ High sensitivity probe, short response time.
- ◆ Keep running up to 6 hours after power supply cut-off.
- ◆ Configurable alarm thresholds. Audio and visual alerts when beyond thresholds.
- ◆ Configurable uploading interval between 1 minute to 24 hours.
- ◆ 20,000 recording points on device, unlimited recording points on the Cloud server.
- ◆ WiFi access points for real-time data collecting and upload to the Cloud platform.
- ◆ Flexible data exporting, can export in multiple formats via the Cloud platform.

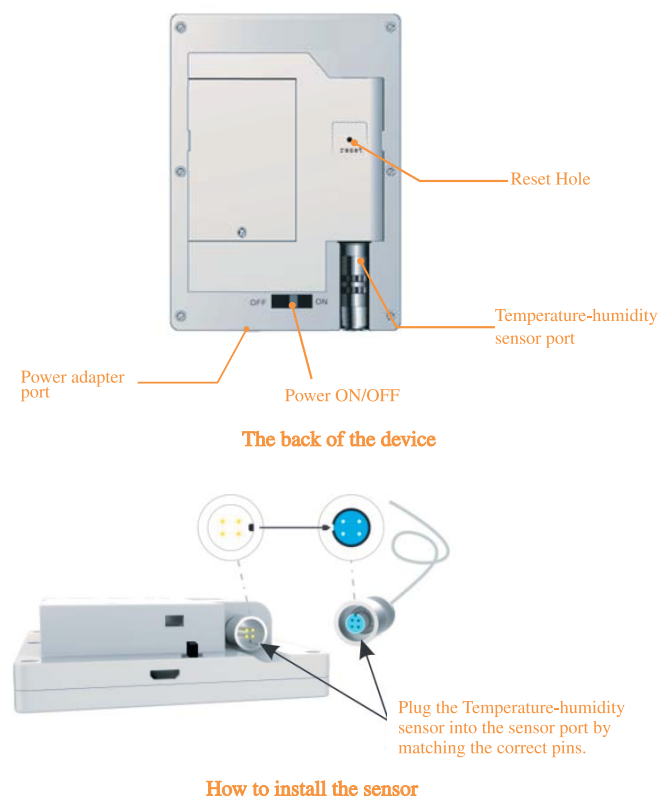
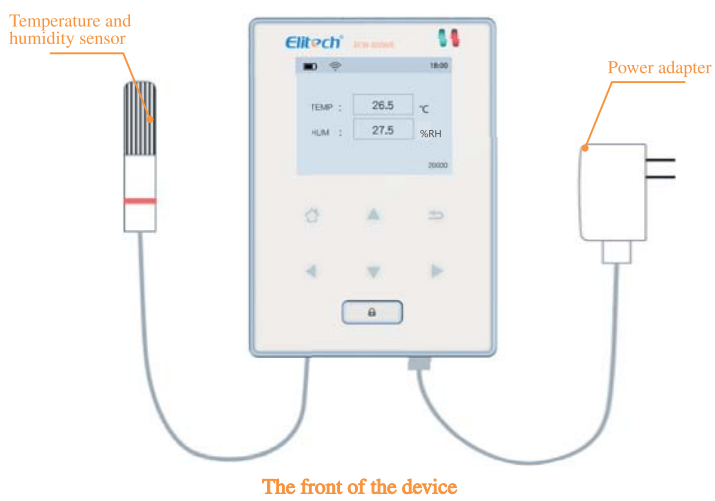
### Technical parameters

- ◆ Power supply: 5V/1A(DC)
- ◆ Measurement range: Temperature: -40℃~80℃; Humidity: 10%RH~95%RH
- ◆ Accuracy: Temperature: ± 0.5℃ (-20℃~ 40℃); ± 1℃(others); Humidity: ±5%RH
- ◆ Temperature resolution: 0.1℃
- ◆ Temperature sensor: NTC; Humidity sensor: Honeywell
- ◆ Temperature/Humidity sensor wire length: 2m
- ◆ Data uploading interval: 1 minute to 24 hours
- ◆ Off-line record capacity: 20,000 recording points
- ◆ Online Cloud Recording Capacity: Unlimited
- ◆ Alarm output: LED indicator, buzzer, e-mails, Cloud platform/App push notification etc.
- ◆ Communication Method: WiFi
- ◆ Battery: 3.7V, 1100mAH rechargeable lithium battery

### Apperance



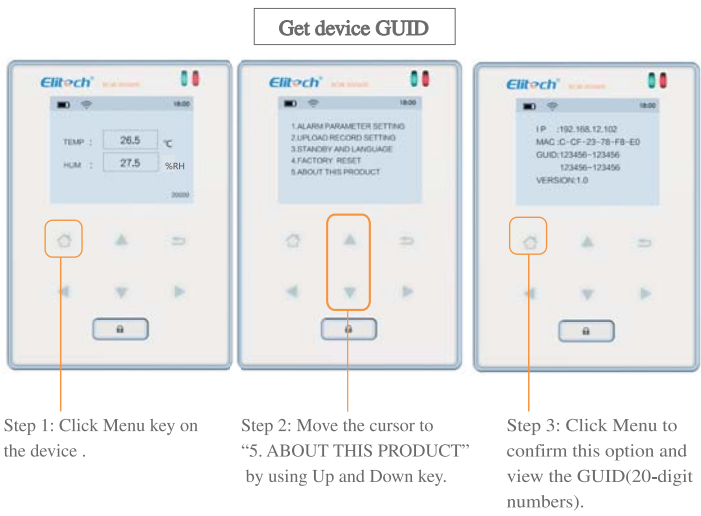
### Installation



### Touch Buttons:

- enter the selected menu.
- shift left/right to change the parameter.
- shift up/down to select the desired menu option.
- back to previous windows.
- lock/unlock the screen.

### GUID Information

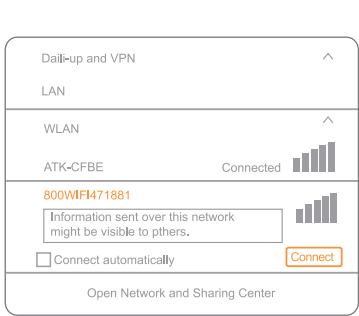


### WiFi Configuration

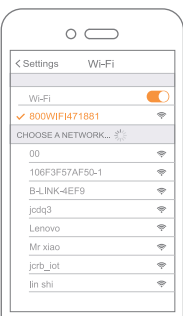
Please turn ON the monitor first and follow the setup steps below.

#### 1. Connect to device's network

Use a smart phone or PCs to search and connect corresponding device's WiFi under the name of: '800wifi\*\*\*\*\*'.



PCs

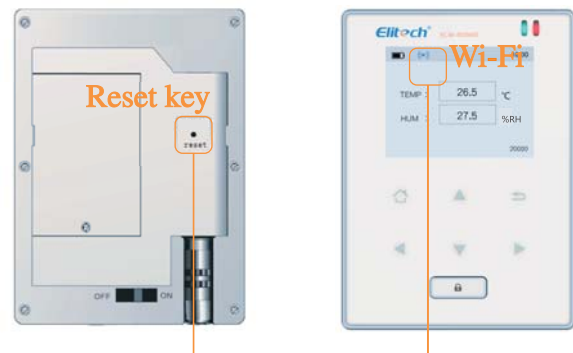


Phones



## 2. Reset

Prick the Reset hole for 5 seconds to reset the device if you want change device's WiFi access.

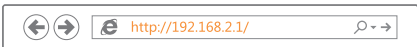


Keep the device on, prick the Reset hole for 5 seconds and restart the device.

The symbol after reboot.

## 3. IP address

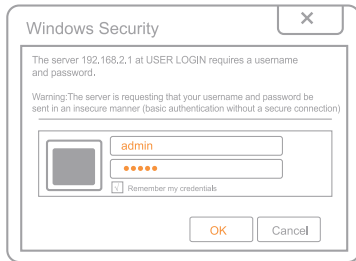
Type in IP address in any web browser: <http://192.168.2.1/>.



## 4. Login

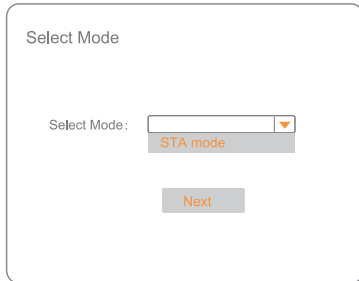
Default user name: admin

Default password: admin.

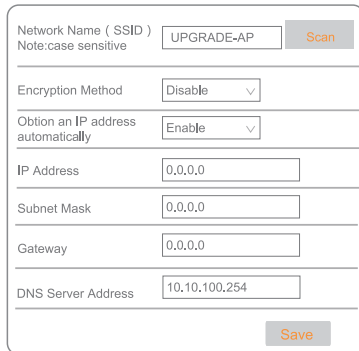


## 5. Settings

Step 1: Select "STA mode" and click "Next".

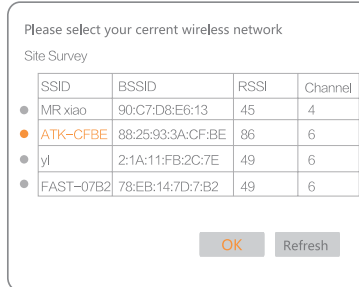


Step 2: Click "Scan".



Step 3: Select a desired WLAN, such as "ATK-CFBE".

Step 4: Click "OK".

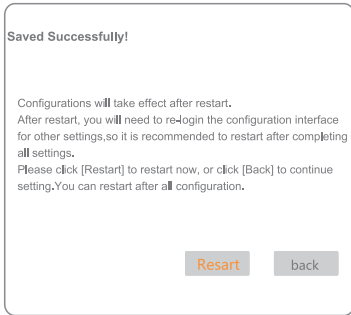


Step 5: Enter WLAN password.

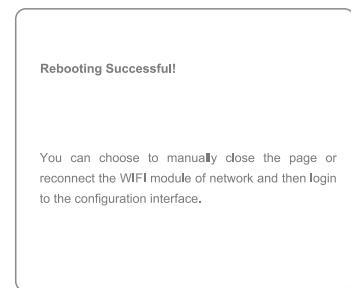
Step 6: Click "Save".



Step 7: Click "Restart".



Step 8: Rebooting Successful! The device is restarted.successfully.

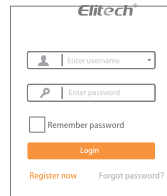


## Elitech App

1. Download and Login:

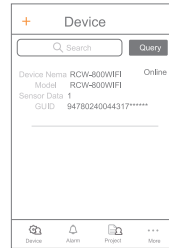
Please scan the QR code on the front of the manual or search Elitech on App Store or Google Play to download Elitech app.

Register and login to your account.



2. Add Device

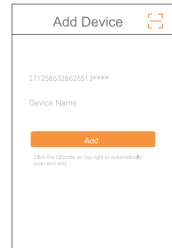
Follow the steps below and repeat the procedures in 'WiFi Configuration' to network the devices.



①Click "+".



②Click and scan the QR code on the back of the device.



③Click "Add" and the device will be added.

## Elitech Cloud

1. Login Cloud Portal

Please type in the URL, <http://www.i-elitech.com> to login for more operation. Click 'Help' to obtain Cloud and App operation instructions.

2. Top up SIM card (only for GPRS Version)

If your device is not a Wi-Fi one, please refer to the App Instruction Manual to recharge your SIM card. You may experience it for two month for free.