

安全注意事项

使用本仪器时，请遵守说明书上记载的规格、功能和使用注意事项，超出使用范围会影响本仪器的安全性能。



注意

- 请勿拆解电池，也不要使电池短路，或擅自给电池充电或加热。否则可能引起电池发热、破裂及电池漏液进入人的眼中。
- 万一误吞了电池，要马上请医生检查。



产业垃圾分别处理的EU(欧洲)诸国的电气 电子设备的废弃时的注意事项

- 在商品或包装上印有的此标记图形是指在EU(欧洲)诸国废弃此产品时不可与一般家庭垃圾同样丢弃。为了减少WEEE(废电气电子设备)埋入土壤的数量，减少对环境的影响，请协助努力做到商品再利用和再生。

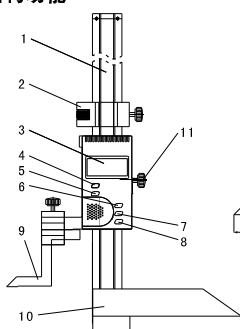
- 关于处理方法的详细内容，请向附近的经销商或代理商咨询。

概述

电子数显高度尺是一种利用容栅测量系统原理对装置在尺框上的划线工作面与底座工作面相对移动分隔的距离进行测量并通过LCD显示出测量值的一种测量工具。

电子数显高度尺可用于绝对测量、相对测量和划线。

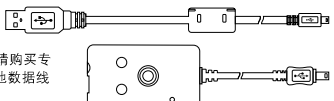
结构功能



- 1.尺身
- 2.微动装置
- 3.液晶屏
- 4.开关键
- 5.归零键
- 6.Hold键
- 7.ABS键
- 8.mm/in键
- 9.测量爪
- 10.底座
- 11.锁紧螺钉

另售：数显卡尺外部输出功能专用数据线。

注意：如需用到外部输出功能，请购买专用数据线使用。不能用其他数据线代替，造成损失概不负责。



主要参数

- 1.电源：3V环保锂电池。
- 2.测量范围：0~300mm。
- 3.分辨率：0.01mm/0.0005"。
- 4.示值变动性：0.01mm。
- 5.最大移动速度：3m/s。

性能特点

- 1.手控电源开关。
- 2.任意位置清零，可作比较测量。
- 3.任意位置公英制转换。
- 4.绝对、相对测量转换。
- 5.具有数据保持功能。
- 6.硬质合金测量爪。

使用说明及注意事项

- 1.使用前，松开制动螺钉，方可移动尺框。
- 2.测量前应擦干净底座和测量爪的测量面，启动电源，将底座和测量爪测量面置平板上，清零。
- 3.测量时，移动尺框使量爪高度略大于被测工件尺寸，再利用微动装置使量爪测量面与工件接触。
- 4.划线时，底座应贴合平板，平稳移动。
- 5.搬动数显高度尺应握持底座不允许抓住尺身，以防尺身变形。
- 6.使用时，应显示数字出现闪烁或不显示时，应更换新电池。
- 7.在数显高度尺的任何部位不能施加电压，更不能用电笔刻字，以免损坏电子元件。
- 8.显示器不能计数（数字锁死）是由于电路偶然因素所产生，属于正常现象，此时应取下电池，等1分钟后重新装入。
- 9.工作条件：温度0~+40℃，相对湿度≤80%。
- 10.储运温度：-10~+60℃。

- 注意：使用本产品前，请仔细阅读本说明书。
- 本公司具有最终解释权，如有变更恕不另行通知。

Digital Height Gauge

Safety Precautions

To ensure operator safety, use this instrument in conformance with the directions and specifications given in this Users' Manual.



CAUTION



- Do not disassemble, short-circuit, charge, or heat the battery. Otherwise the battery content may leak to come into contact with the eye, or cause battery heating or explosion.
- If a battery is swallowed, immediately consult a doctor.

Disposal of Old Electrical & Electronic Equipment (Applicable in the European Union and other European countries with separate collection systems)

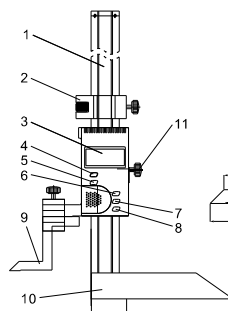
This symbol on the product or on its packaging indicates that this product shall not be treated as household waste. To reduce the environmental impact of WEEE (Waste Electrical and Electronic Equipment) and minimize the volume of WEEE entering landfills, please reuse and recycle. For further information, please contact your local dealer or distributors.

Instruction

Digital Height Gauge is a measuring tool based on capacitive measuring system, which ensures the relative movement separated distance between the lining work surface on the frame and the base work surface, and display the readout on the LCD.

It can be used for relative measurement, absolute measurement and lining.

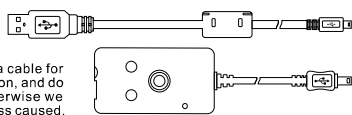
Structure and Function



- 1.Rod body
- 2.Micromotion installations
- 3.LCD display
- 4.ON/OFF key
- 5.Zero key
- 6.Hold key
- 7.ABS key
- 8.mm/in conversion key
- 9.Measuring claw
- 10.Stand
- 11.Fastening screw

Additional product: Special data cable for external output function of digital caliper.

Note: Please buy a special data cable for the use of external output function, and do not use other data cables, otherwise we will not be responsible for the loss caused.



Technical Data

1. Battery: 3V lithium battery.
2. Measuring range: 0-300mm.
3. Resolution: 0.01mm/0.0005 " .
4. Accuracy: 0.01mm.
5. Measurement speed: 3m/s.

Characteristic

1. Manual power switch.
2. Zero-setting at any position, can be used for comparative measurement.
3. mm/inch measurement system conversion.
4. Relative/absolute measurement interchange at any position.
5. Data hold function.
6. Carbide measuring jaw.

Using Method and Attentions

- 1.Before using, loosen the clamp screw, and move the carrier frame.
- 2.Before measuring, clean the base and the measuring surface of the measuring jaw, turn on the power, and place the base and the measuring surface of the measuring jaw on the same horizontal level, and set zero.
- 3.When measuring, move the carrier frame and make the measuring jaw height slightly higher than the dimension of the measured workpiece, and let the measuring surface of by adjusting the fine adjustment device.
- 4.When lining, the base should be fitted to the horizontal level, and steadily moved.
- 5.When moving the digital height gauge, hold the base, instead to hold the beam, to prevent the beam deformation.
- 6.When using, if the readout flickers or non readout displays, replace the battery.
- 7.Do not apply voltage on any part of the digital height gauge, do not engrave letters so as to avoid damage on the electronic circuit.
- 8.If the LCD readout does not count, it is normal due to accidental electronic circuit problem, please remove the battery, and put in the battery again 1 minute later.
- 9.Work condition: temperature 0~+40℃, relative humidity≤80%.
- 10.Storage temperature: -10~+60℃.

- Note: Please read this manual carefully before using this product.
- The company has the right of final interpretation, which is subject to change without prior notice.